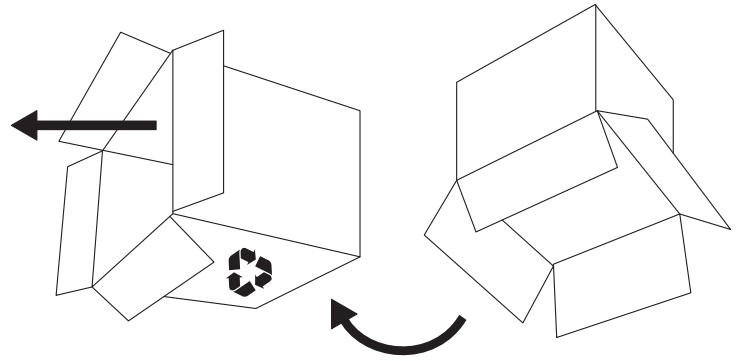


2



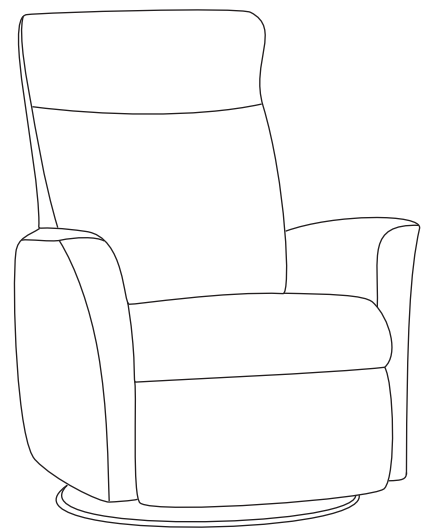
1

!

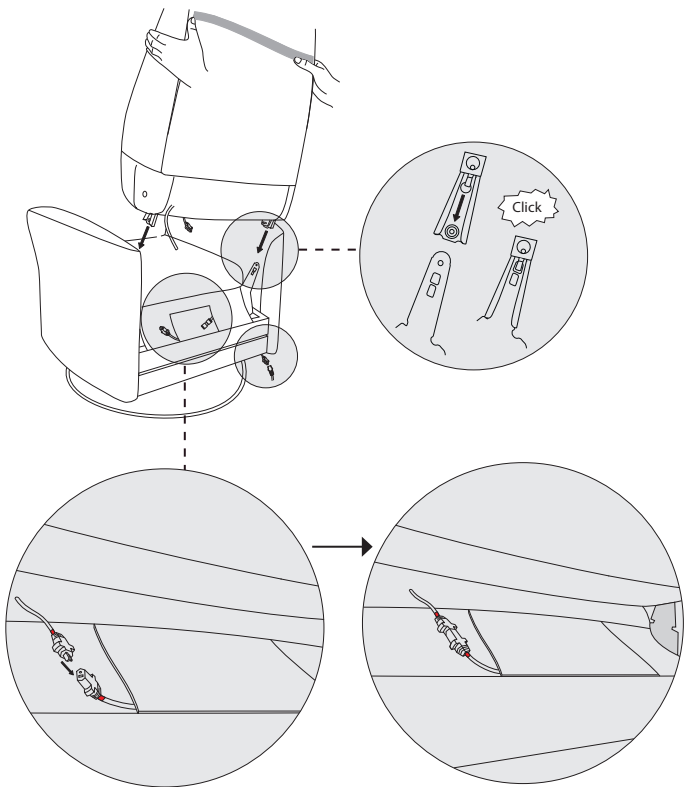
NOTE Never move the product by sliding/dragging or lifting by the armrests: the correct way to move is by lifting it from underneath the base/arm. Protect the edges of your furniture while in transit. Protect non-carpeted floors by using felt pads beneath the chair at all times. Ensure to tighten screws, bolts and knobs every four months or as required.

Assembly Instructions

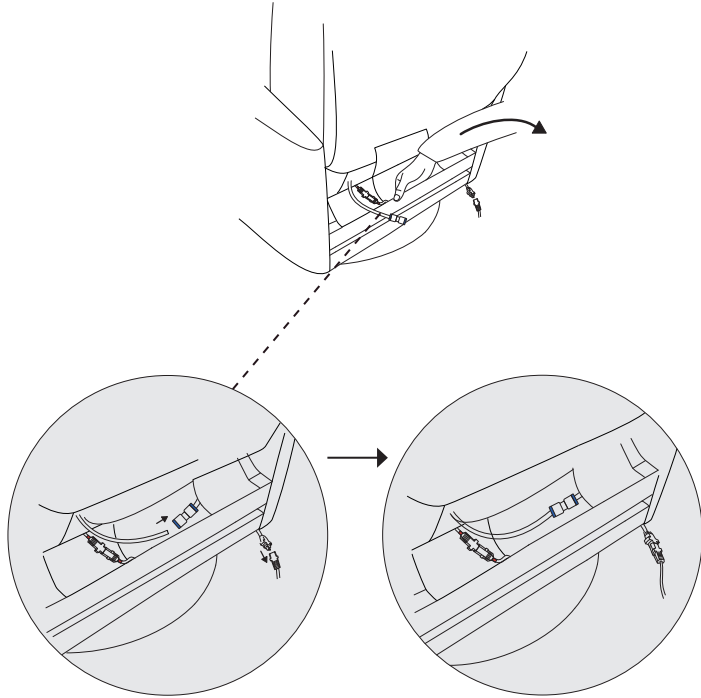
Glider Chair Power Extra



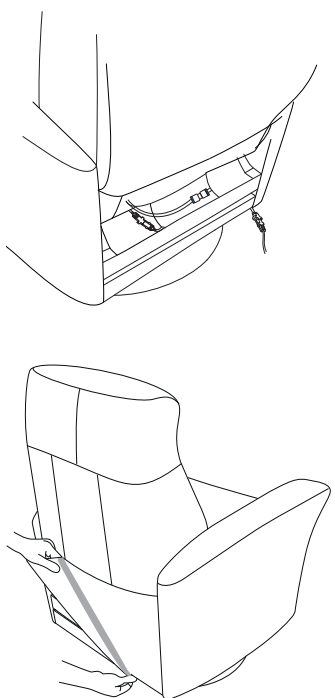
3



4



5



6

